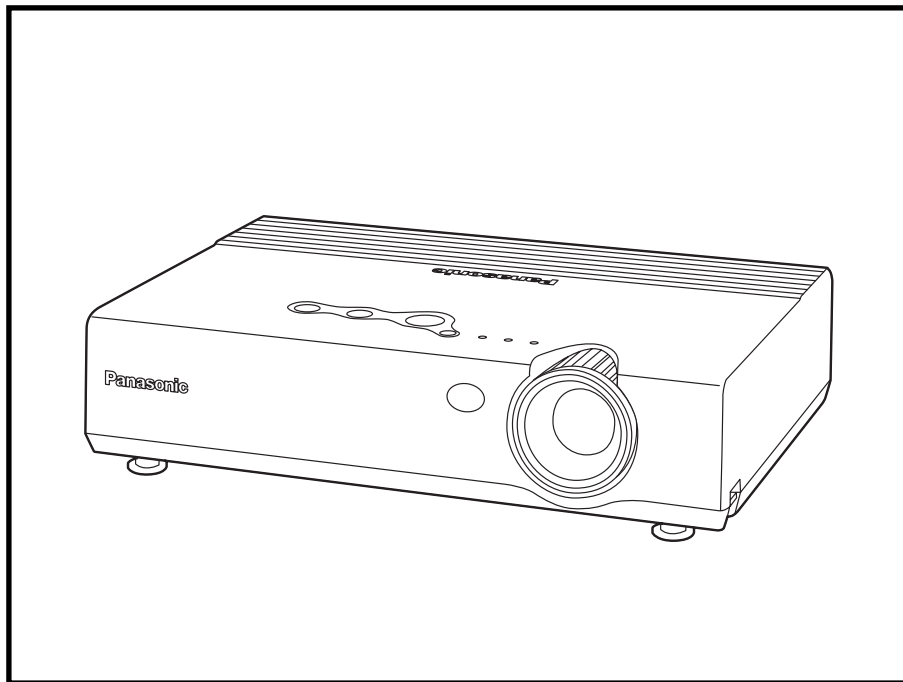


S P E C F I L E

PRODUCT NO.: PT-LB10V
PRODUCT NAME: Micro-Portable LCD Projector



MAJOR FEATURES

- High performance, compact body
 - Bright 1600 lumens
 - Notebook-size compact body
 - Ultra-lightweight: 2.1 kg (4.7 lbs)
 - Short-throw zoom lens
- Quick operation
 - 5-second speed start
 - One-touch auto setup with digital keystone correction
 - Direct power off
- Sophisticated functions
 - Projector AI
 - Index window
 - Secure, anti-theft features
 - Auto power off

Specifications

Power supply		100–240 V AC, 50/60 Hz
Power consumption		220 W (6 W in standby mode with fan stopped)
Optical system		Dichroic mirror separation/prism synthesis system
LCD panel	Panel size	0.7" diagonal with micro lens array (4:3 aspect ratio)
	Display method	Transparent LCD panel (x 3, R/G/B)
	Drive method	Active matrix
	Pixels	786,432 (1,024 x 768) x 3, total of 2,359,296 pixels
	Pixel configuration	Stripe
Lens		Manual zoom/focus lens (1:1–1:1.2), F 2.0–2.3, f 22.0–26.2 mm
Lamp		155 W UHM™ lamp
Screen size		838–7,620 mm (33–300 inches) diagonally, 4:3 aspect ratio
Colors		Full color (16,777,216 colors)
Brightness		1600 lumens
Center-to-corner uniformity ratio		90%
Contrast ratio		400:1*1 (full on/full off)
Resolution	RGB	1,024 x 768 pixels (1,600 x 1,200 pixels with compression)
	Video	760 TV lines (horizontal resolution)
Scanning frequency	RGB	Horizontal: 15–91 kHz, Vertical: 50–85 Hz
	YPbPr	480i (525i): fH 15.75 kHz; fV 60 Hz 576i (625i): fH 15.63 kHz; fV 50 Hz 480p (525p): fH 31.5 kHz; fV 60 Hz 576p (625p): fH 31.25 kHz; fV 50 Hz 720p (750p): fH 45 kHz; fV 60 Hz 1080i (1125i): fH 33.75 kHz; fV 60 Hz 1080i (1125i): fH 28.125 kHz; fV 50 Hz
	S-Video/Video	NTSC, NTSC4.43, PAL-M, PAL60: fH 15.75 kHz; fV 60 Hz PAL, SECAM, PAL-N: fH 15.63 kHz; fV 50 Hz
Optical axis shift		6:1 (fixed)
Keystone correction range		Vertical: approx. ±30°
On-screen menu		8 languages: English, French, German, Spanish, Italian, Chinese, Korean, Russian
Installation		Ceiling/desk, front/rear (menu selection)
Built-in speakers	Size	4 x 3 cm x 1, oval
	Output power	1.0 W (monaural)
Terminals	RGB IN	D-sub HD 15-pin x 1
	RGB signal	G: 0.7 Vp-p (1.0 Vp-p for Sync on G), 75Ω R, B: 0.7 Vp-p, 75Ω HD, VD, SYNC: TTL, high impedance (positive/negative polarity)
	YPbPr signal	Y: 1.0 Vp-p (including sync signal), 75Ω Pb, Pr: 0.7 Vp-p, 75Ω
	RGB OUT	D-sub HD 15-pin x 1
	RGB signal	G: 0.7 Vp-p (1.0 Vp-p for Sync on G), 75Ω R, B: 0.7 Vp-p, 75Ω HD, VD, SYNC: TTL, high impedance (positive/negative polarity)
	YPbPr signal	Y: 1.0 Vp-p (including sync signal), 75Ω Pb, Pr: 0.7 Vp-p, 75Ω
	VIDEO IN	RCA pin x 1, 1.0 Vp-p, 75Ω
	S-VIDEO IN	Mini DIN 4-pin x 1, Y: 1.0 Vp-p, C: 0.286 Vp-p, 75Ω
	AUDIO IN	RCA (L, R) x 1, 0.5 Vrms, for RGB/VIDEO/S-VIDEO
	SERIAL	Mini DIN 8-pin x 1 (RS-232C)

Power cord length		2 m
Cabinet material		ABS/PC
Dimensions (W x H x D)		297 x 65 x 210 mm (11-23/32" x 2-9/16" x 8-9/32")*2
Weight		2.1 kg (4.7 lbs.)
Operating environment	Temperature	0° – 40°C (32°–104°F)
	Humidity	20%–80% (no condensation)
Remote Control Unit	Power supply	3 V DC (button battery x 1)
	Operation range	Approx. 7 m when operated from directly in front of the signal receptor
	Dimensions (W x H x D)	40 x 86 x 6.5 mm (1-9/16" x 3-3/8" x 1/4")
	Weight	17.5 g (0.62 oz.) (including a battery)
Supplied accessories		Power cord Wireless remote control Button battery for remote control VGA cable Carrying bag
Optional accessories		Replacement lamp unit: ET-LAB10 Ceiling mount bracket: ET-PKC80 Full-function wireless remote control: ET-RM300 Serial adapter (DIN 8-pin/D-sub 9-pin): ET-ADSER

*1: In AI mode.

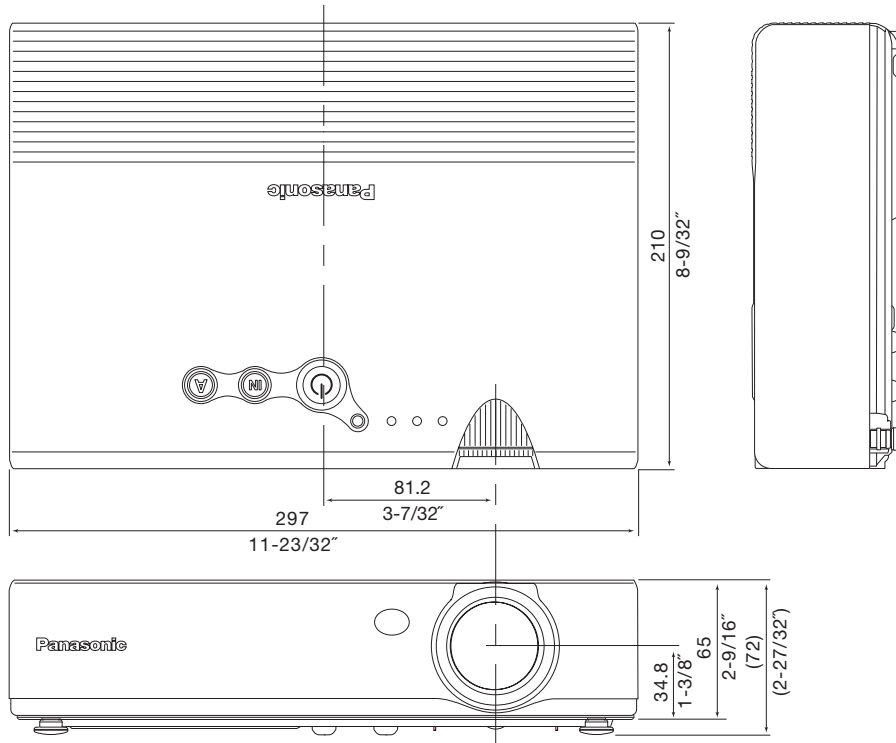
*2: Height including protruding parts and legs: 72 mm (2-27/32").

Weights and dimensions shown are approximate.
Specifications subject to change without notice.

Micro-Portable LCD Projector

PT-LB10V

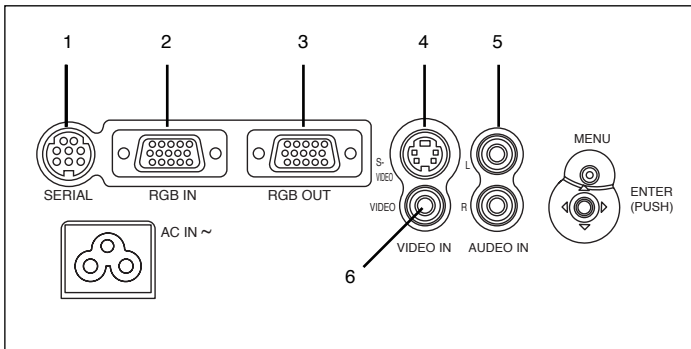
Dimensions



unit: mm (inch)

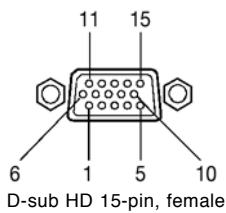
Note: This illustration is not drawn to scale.

Terminals



- 1 Serial
- 2 RGB input
- 3 RGB output
- 4 S-Video input
- 5 Audio input
- 6 Video input

RGB IN connector pin assignment



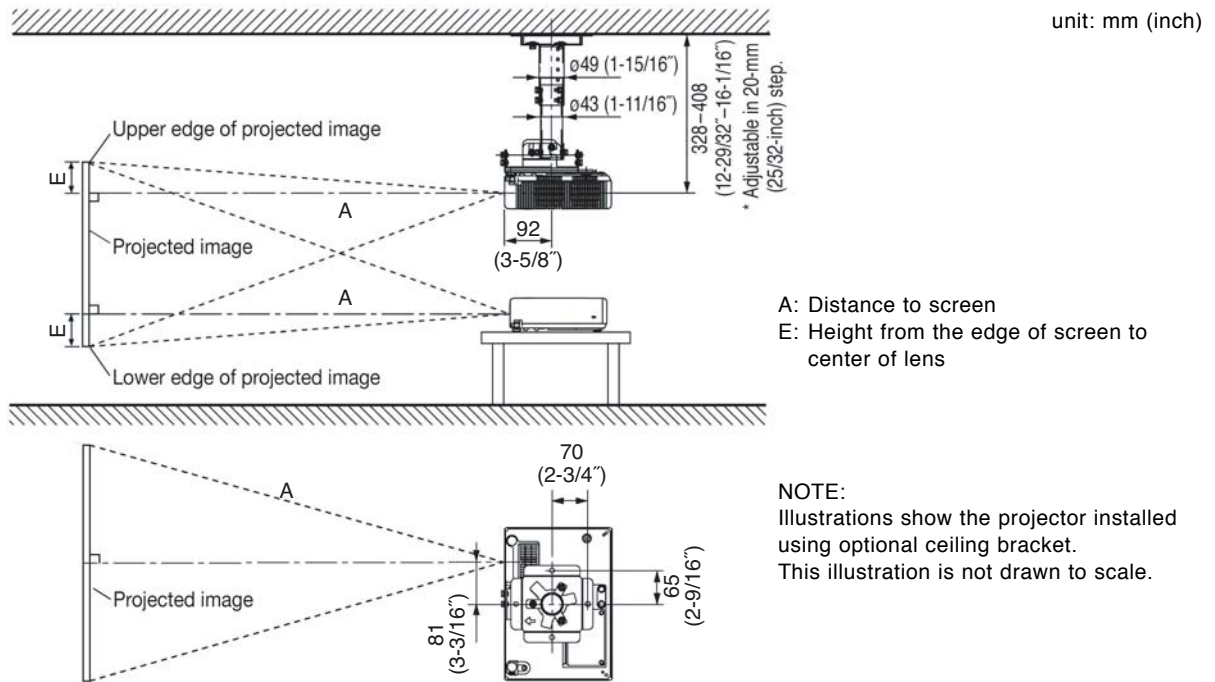
no.	signal	no.	signal	no.	signal
1	R/PR	6	GND	11	NC
2	G/Y	7	GND	12	SDA*
3	B/PB	8	GND	13	HD/SYNC
4	GND	9	NC	14	VD
5	GND	10	GND	15	SCL*

* Effective when connected to a PC having proper functions.

Micro-Portable LCD Projector

PT-LB10V

Standard setting-up positions



Diagonal image size (4:3 aspect ratio)	Distance to screen		Height from the edge of screen to center of lens
	min.	max.	
33" / 0.84 m / 2.7'	-	1.1 m / 3.6'	8 cm / 3.1"
40" / 1.02 m / 3.3'	1.2 m / 3.9'	1.4 m / 4.6'	9 cm / 3.5"
50" / 1.27 m / 4.2'	1.5 m / 4.9'	1.8 m / 5.9'	11 cm / 4.3"
60" / 1.52 m / 4.9'	1.8 m / 5.9'	2.1 m / 6.9'	14 cm / 5.5"
70" / 1.78 m / 5.8'	2.1 m / 6.9'	2.5 m / 8.3'	16 cm / 6.3"
80" / 2.03 m / 6.7'	2.4 m / 7.9'	2.9 m / 9.5'	18 cm / 7.1"
90" / 2.29 m / 7.5'	2.8 m / 9.2'	3.2 m / 10.5'	20 cm / 7.9"
100" / 2.54 m / 8.3'	3.0 m / 9.8'	3.6 m / 11.8'	22 cm / 8.7"
120" / 3.05 m / 10.0'	3.7 m / 12.1'	4.3 m / 14.1'	26 cm / 10.2"
150" / 3.81 m / 12.5'	4.6 m / 15.1'	5.4 m / 17.7'	33 cm / 13.0"
200" / 5.08 m / 16.7'	6.1 m / 20.0'	7.3 m / 24.0'	44 cm / 17.3"
250" / 6.35 m / 20.8'	7.6 m / 24.9'	9.1 m / 29.9'	55 cm / 21.7"
300" / 7.62 m / 25.0'	9.2 m / 30.2'	11.0 m / 36.1'	66 cm / 26.0"

NOTE:
Values shown are approximate.

Calculation of the projection distance

For a screen size different from the above, use the equation below to calculate the projection distance.

- Aspect ratio 4 : 3
 - minimum L (m) = (diagonal screen size in inches) x 0.0298 - 0.037
 - maximum L (m) = (diagonal screen size in inches) x 0.0361 - 0.037
- Aspect ratio 16 : 9
 - minimum L (m) = (diagonal screen size in inches) x 0.0325 - 0.037
 - maximum L (m) = (diagonal screen size in inches) x 0.0393 - 0.037

Computer data compatibility

This projector accepts up to 91 kHz horizontal scanning frequency and 162 MHz dot clock.

NOTE: The projector is not fully compatible with RGB signals of which dot clock is higher than 100 MHz.
The display resolution of this projector is 1024 x 768 pixels. If the display resolution indicated in the above data does not match this resolution, the input signal will be converted to 1024 x 768 pixels.