

# Introducing Onyx. It's so simple.



## The new generation of permanently-tensioned screens begins with the **Draper Onyx**.

You can have a beautifully framed image hanging on the wall in just 10 to 15 minutes—**assembly is that easy!**

- 4" wide beveled, extruded aluminum frame interconnects on site with the tool Draper provides.
- Each side piece slipfits tightly to injection molded plastic corners, forming perfectly mitered edges.

A radical new approach to fabric attachment will amaze even the toughest of critics. There are **no** snaps!

- Uniform tension is applied to the entire surface area.
- Built-in feature\* enables you to adjust the surface tension (up to 1½") in just seconds, **without tools!**

The wide black frame absorbs projector "wash":

- Add optional velvety black textile, Vel-Tex, to the frame to eliminate reflections.
- Draper's most popular sizes are in stock for prompt shipment.

Your choice of a viewing surface and format:

- Surfaces—Front Projection: M1300, M2500 and HiDef Grey. Acoustically Transparent: AT1200 and AT Grey. Rear Projection: Cineflex.
- Offered in ALL projection formats up to a maximum custom size of 20' x 20'.

*\*Unique fabric retention system (patent pending).*

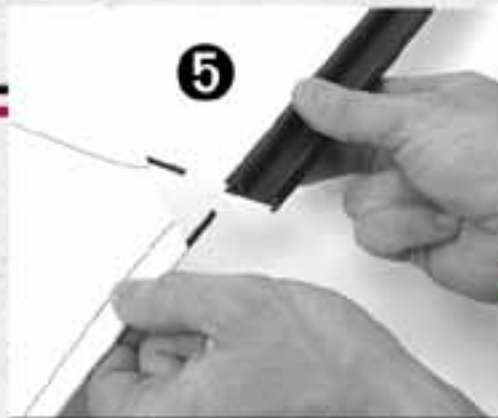
For more information about the Draper Onyx please visit [http://www.draperinc.com/Screen\\_Pages/Onyx\\_projection\\_screen.htm](http://www.draperinc.com/Screen_Pages/Onyx_projection_screen.htm)

Turn the page to see how easily you can assemble the Onyx.

# DRAPER

# Assemble the Onyx in just 10 minutes!

We provide the tool!



For more information about  
the Onyx please visit

[http://www.draperinc.com/  
Screen\\_Pages/  
Onyx\\_projection\\_screen.htm](http://www.draperinc.com/Screen_Pages/Onyx_projection_screen.htm)

# DRAPER

411 S. Pearl St., Spiceland, IN 47385 USA ■ 765-987-7999 ■ fax 765-987-7142

e-mail [draper@draperinc.com](mailto:draper@draperinc.com) ■ [www.draperinc.com](http://www.draperinc.com)

©2003 Draper, Inc.

Form OnyxFlyer03

Printed in USA