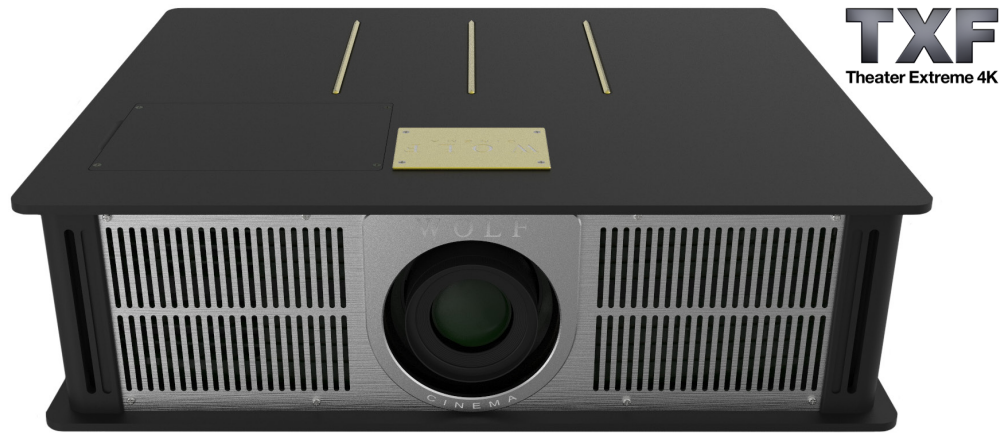


TXF-700 Features

- Latest exciting edition in Wolf Cinema's "Theater Extreme" 4K imaging series
- True UHD/4K imaging home cinema projector
- Next-gen DLP® chip for enhanced 4K imaging (3840 X 2160) from all SD, HD and Ultra HD sources
- HDR10 - High Dynamic Range imaging performance
- New extended life 240W lamp, nominally ~4,000 hrs; up to 15,000 hours in Dynamic Mode
- 2400 ANSI, ~1.2M:1 CR performance (Dynamic Black enabled)
- Wolf Cinema's unique HDR emulation mode, extending dynamic range for non-HDR encoded sources
- Extended range primary optics: 1.40 - 2.25:1 TD
- 15% vertical offset (+/- 5%)
- 18Gbps HDMI 2.0 input with HDCP 2.2 compatibility
- IR Remote Control included plus RS-232, RJ-45 control system capabilities
- Elegant all-metal cabinet featuring improved thermal coefficients for extended projector and lamp life
- Ultra quiet design: 25dB @ 1 meter (Eco), 28dB (Bright)
- Optional ProScaler external video processors for enhanced SD, HD and 4K imaging performance
- Wolf Cinema ProScalers provide for E-VariScope™ when viewing 1.78, 1.85, and 2.35 widescreen aspect ratio content
- Optional WC-PM-MS ceiling mount



4K

DLP

HDR
HIGH DYNAMIC RANGE

Wolf Cinema's TXF-700 "Theater Extreme" UHD/4K Cinema Projector

Delivering another great value in our *Theater Extreme* series of home theater projectors, Wolf Cinema proudly introduces the TXF-700. Crafted with Texas Instrument's remarkable new UHD/4K DLP® imaging chip set, the TXF-700 will produce amazing images from all your favorite SD, HD and Ultra HD/4K sources.

Ideal on home theater screens up to 12' wide, the TXF-700 creates natural film-like images - with amazing 4K detail, exceptionally balanced peak white and contrast levels, plus superior color renditions. The TXF-700 features the latest HDR-10 (High Dynamic Range) imaging capabilities - plus a unique HDR emulation mode for non-HDR encoded sources. The TXF-700 also boasts expanded color palettes emulating the DCI-P3 and REC.2020 color gamut settings - creating striking, true-to-life imagery that can rival the most dynamic feature films at your neighborhood cinema complex!

Each projector is carefully hand-built and preloaded with Wolf Cinema's custom calibration settings, so that each unit can look its very best - right out of the box. For enhanced performance choose from one of our optional 4K ProScaler video processors, which can serve as the heart of your high definition imaging ecosystem. Multiple HDMI 4K60p inputs and outputs - with 18Gbps throughput - facilitate connection to both the projector and AV system components. Advanced processing and signal management tools ensure the very best picture possible from all SD, HD and Ultra HD sources. Plus, the ProScaler's E-VariScope™ technology makes selecting your favorite 1.78:1, 1.85:1, 2.35:1, etc. aspect ratios a snap, when mated up with suitable CinemaScope™ 2.35:1 widescreens.

The TXF-700 is housed in an elegant all-metal cabinet; good looks aside, this also serves as a highly-efficient thermal infrastructure for extended projector and lamp life. Multiple whisper fans keep the projector at optimum operating temperatures at all times.

Come experience this remarkable home theater projector at a Wolf Cinema dealer nearest you.

TXF-700

Specifications

Display Panel/Size	Single 0.66" TRP UHD/4K DLP® Technology by Texas Instruments™
Color Wheel	6 Segment RGBRGB color wheel
Projector Lens, TD	1.40 - 2.25:1 TD factor (x SW) Lens shift~15% Vertical (manual)
Light Source	240W UHP Lamp, part no. WC-TXF7L-240
Lamp Life	~4000/10,000/15,000 (Mode dependent: Bright/ECO/Dynamic)
Performance	2400 ANSI, ~1,200,000:1 CR performance (Dynamic Black Enabled)
Resolution	3840 x 2160 (Maximum resolution 4096 x 2160)
SPL	Approx. 25dB @ 1 meter (Eco), 28dB (Bright)
HDR (High Dynamic Range)	HDR-10 (standard with encoded UHD/4K sources; HDR emulation modes available with SD and HD content)
Inputs/Outputs	HDMI 1.4a (x1), HDMI 2.0 w/HDCP 2.2, MHL 2.1 and Full 18Gbps (x1), VGA-In, Audio-In (3.5mm), Audio-Out, SDPIF Out (Optical), USB 2.0 Port (Service), USB-A Power
Control	IR, RS-232C terminal, RJ-45 LAN terminal, 12V Trigger
Power Requirements	AC 110V-240V, 50/60Hz, auto switching
Power Consumption	317W Typical (Bright mode), 348W Max (Bright mode), 259W Typical (Eco+ mode), 285W Max (Eco+ mode)
Operation Environment	Temperature: 41 to 104°F (5 to 40°C) Humidity: 85% max humidity, nocondensation; storage temperature: -10C to 60C
Installation Height	Recommended below 5000ft. (1524m); high altitude mode available up to 10,000 feet (3048 meters)
Dimensions (WxHxD)	21" x 9" x 17" [preliminary]
Weight	28 lbs [preliminary]

Optional ProScaler Video Processors



ProScaler MK IV



ProScaler MK VI

ProScaler MK IV	HDMI 2.0 inputs (x4), HDCP 2.2 compliant; HDMI 2.0 outputs (x2), 2U rack mountable chassis
ProScaler MK VI	HDMI 2.0 inputs (x2), HDCP 2.2 compliant; HDMI 2.0 outputs (x2), 1U rack mountable chassis
Video Processing	10 bit scaling, 4913 point (17 x 17 x 17) CMS advanced filtering, MPEG mosquito noise, block artifact reduction, temporal noise reduction; multiple configuration memories per input
Control Terminals	IR, RS-232
Power Requirements	AC 110V-240V 50/60Hz

All features, designs and specifications subject to change without notice. VariScope and E-VariScope are trademarks of Wolf Cinema. DLP is a registered trademark of Texas Instruments. All rights reserved.