

# XGA **C95/C105**

XGA MULTIMEDIA PROJECTORS

**Bright 1500/2000 ANSI lumens \***

**Silent operation  
<34 dB(A)**

**Lightweight: 3.4 kg**

**Truly digital with  
DVI and USB  
interfaces**

**Perfect for small to  
medium-sized  
conference facilities**

\* C95/C105





- from the pioneers of the first fully-digital portable LCD projectors, the next generation is now available

- following the award-winning and best-selling C90/C100 range

- 1500 and 2000 ANSI lumens of brightness, optimal for any small to mid-sized installation environment

- weighing just 3.4 kg the C95 and C105 are two of the most portable and compact desktop projectors around

- effectively silent to minimise distractions and aid concentration

#### BRIGHT, PORTABLE and HIGH CONTRAST IMAGES

With 1500 ANSI lumens for the C95, and an impressive 2000 for its companion the C105, these projectors are even brighter than their predecessors. More importantly, market feedback has told us that this is the optimal brightness for a typical mid-sized installation environment.

Weighing just 3.4 kg these units are easily carried between locations, or even on the road if needed.



*The filter can easily be taken out for cleaning and replacement.*

The ASK C95 and the C105 both offer the same exceptionally high contrast, enabling outstanding image dynamics and intense, saturated colours - great for graphics, on-screen presentations and information sharing.

#### EFFECTIVELY SILENT OPERATION

The operating noise level of a projector is a critical consideration when you want a conference audience to focus on your presentation and your voice or soundtrack without distraction. Emitting less than 34 dB(A), the C95 and C105 barely make a whisper, aiding concentration and productivity.

#### VERSATILE

The sheer scope of connectors, the wired remote control, and the compactness of the C95 and C105 make them simple to install anywhere. Their zoom lenses, and the Digital Keystone Correction feature that allows you to correct and make sure the image stays square, lets you deliver a perfect full screen presentation. More importantly you can place the projector virtually anywhere in a conference room. That's important when you need



RS232 CONNECTIVITY makes control of the projectors easy when used in conjunction with standard control panels and/or control room systems.

to accommodate multiple presentation settings. Coupled with the ability to simultaneously connect to five different input sources, these projectors are some of the most advanced and versatile projectors in the world.

#### ENHANCED FEATURES

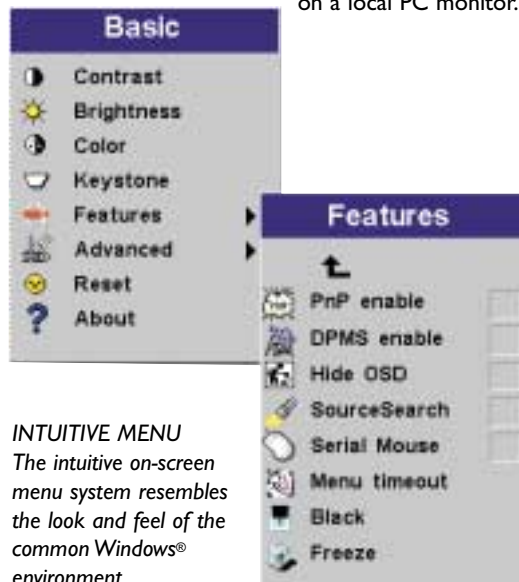
The ASK C95 and C105 represent further advances in an already well-proven and award winning series of products. We've anticipated future compatibility requirements in respect of DVI and input signal bandwidth (both digital and analogue). But, for users who are still not yet equipped to utilise every feature, it's reassuring to know that your projector will remain a state-of-the-art machine for the foreseeable future.

#### EASE OF USE

Despite the growing capabilities of machines in our C-model range, our emphasis remains on ease of set up, installation and use.

The icon and text-based menu (available in 10 languages) makes navigation simple. Users will already be familiar with the Windows®-like environments. The menus are also intuitive, intelligently anticipating user intentions. Set-up and adjustment is fully-automatic, cables and connectors are colour-coded, and there's automatic source detection.

This means that these projectors are startlingly easy to use. What's more, the monitor loop-through facility enables the presenter to face an audience (with his or her back to the screen) and to still watch the presentation on a local PC monitor.



**INTUITIVE MENU**  
The intuitive on-screen menu system resembles the look and feel of the common Windows® environment.

#### DVI and ANALOGUE; The BEST of ALL WORLDS

Both the C95 and its companion, the C105, incorporate a DVI data connector. That's the system connecting computers to digital display devices like projectors. DVI is a relatively new standard within the IT industry, largely superseding its analogue predecessor and guaranteeing no



loss off information. What this means in practical terms is that images are now entirely stable, sharper and more realistic.

And easier to set up, because no adjustments need to be made. Users can still harness an analogue input and Plug and Play, which allows the automatic set-up of PC hardware and peripherals. And they can still use PnP and DFP too. So, all in all, C95 and C105 owners enjoy the best of all worlds.



## Connection Configuration

Position the ASK C95/C105 anywhere in the room.



Display video from DVD, VCR, document camera or video camera.

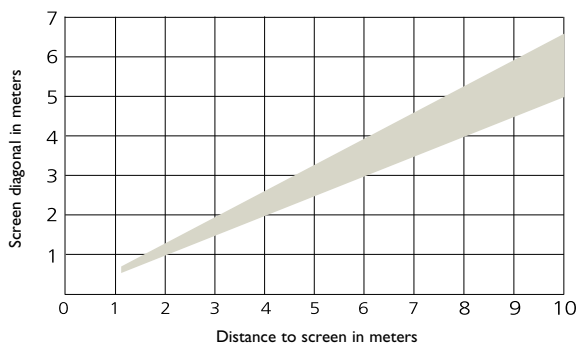
Simultaneously connect up to three computer sources to accommodate multiple presenters.



## Screen Sizes:

Screen width	Distance to screen in meters	1,10	2,00	4,00	6,00	8,00	10,00
Minimum width in meters		0,44	0,80	1,60	2,40	3,20	4,00
Maximum width in meters		0,58	1,05	2,11	3,16	4,21	5,26

Screen diagonal	Distance to screen in meters	1,10	2,00	4,00	6,00	8,00	10,00
Minimum diagonal in meters		0,55	1,00	2,00	3,00	4,00	5,00
Maximum diagonal in meters		0,72	1,32	2,63	3,95	5,26	6,58



## Specifications

### Compatibility

Computer	PC, MAC, Workstation, 1280 x 1024 max resolution
Video	S-Video, Composite Video PAL, BGHI, M, N, SECAM, NTSC 3.58 / 4.43 Horizontal. Scan rate 15 - 100 kHz Vertical. Scan rate 43 - 130 Hz
Bandwidth	160 MHz analogue, 112 MHz digital
Mouse	USB, PS/2, Serial Mouse

### Display

Technology	(C105) 0.9" Polysilicon LCD x 3 w/MLA (Micro Lens Array) (C95) 0.9" Polysilicon LCD x 3
Resolution	1024 x 768
Brightness	(C105) 2000 ANSI lumens (max) (C95) 1500 ANSI lumens (max.)
Contrast Ratio	450 : 1
Lamp	200W UHP / up to 2000 hours
Colours	16.7 Mill - 24 bit

### Optics

Lens	1.3x Manual Zoom and Focus, f= 36 - 47 mm, F/1.8 - 2.1
Image Size	20 - 260" diagonal
Throw Distance	1.1 - 10m
Throw Ratio	1.9 - 2.5 : 1 (distance : width)
Keystone Correction	Optical: 10 degrees, 100% image offset Digital: +/- 30 degrees

### I/O

Computer 1	DVI (Digital Visual Interface) 3.5 mm mini jack stereo audio
Computer 2	VGA 15-pin HDDSUB
Computer 3	VGA 15-pin HDDSUB 3.5 mm mini jack stereo audio
Mouse Control	USB (Mouse 1) 8-pin Mini DIN for MS Serial and PS/2 Mouse (Mouse 2)
RS-232 Control	Through 8-pin Mini DIN (Mouse 2)
Composite Video	RCA
S-Video	4-pin mini DIN
Video audio	2 x RCA L/R
Monitor Out	VGA 15-pin HDDSUB
Audio Out	2 x RCA L/R
Speakers	2 x 1 W
Wired Remote	2.5 mm mini jack

### Metrics

Size	98 x 249 x 320 (333) mm (H x W x D) (with lens)
Weight	3.4 kg
Operating Noise	< 34 dB(A)

### Supplied Material

Cables	VGA cable, 4m DVI Digital Data cable, 2m Audio/Video cable, 4m Power Cord, 4m USB mouse cable Mouse cable and adapters for PS/2 and MS Serial Stereo Audio Cable, 3.5mm Jack / 3.5mm Jack, 4m
--------	---

### Accessories

Accessories	Lens cap BatMouse Remote Control w/batteries and laser pointer Soft carrying case Scart adapter (country dependent) Product documentation
-------------	---

### General

Conformances	CE, UL, cUL, IRAM, NOM, FCC Class A
Warranty	Two-years parts and labor
Lamp warranty	90 days/500 hours
Operating temp	10 - 35°C, 50 - 95°F (ambient operating)
Power Supply	100 - 240 VAC, 50/60Hz
Power Consumption	<220W



**InFocus ASA**  
K. G Meldahl vei 9,  
Postboks 1403  
N-1602 Fredrikstad  
Norway  
Tel.: +47 69 38 11 00  
Fax: +47 69 34 06 32  
E-mail: marketing.europe@infocus.com

**InFocus BV**  
Olympia 1  
1213 NS Hilversum  
The Netherlands  
Tel.: +31 35 647 4000  
Fax: +31 35 642 3999  
E-mail: marketing.europe@infocus.com

[www.askprojectors.com](http://www.askprojectors.com)