

# Desktop Projector™ 5900

vivid and versatile

## A WINNING IMAGE

color, clarity and brightness for vivid images

## SMART ENOUGH TO SHARE

two computer, two video, and two mouse inputs accommodate multiple users for smooth transitions between presentations

## BRIGHTEST

at 700 ANSI lumens, no other SVGA projector is brighter

## SVGA AND MORE

"Fit-to-View"™ technology supports full-screen images from any computer

## LIGHTWEIGHT CHAMPION

just 14 pounds and a compact design make it a handy traveling companion

## ZOOM IN, ZOOM OUT

motorized 1.6:1 zoom and focus give the ultimate in projection versatility



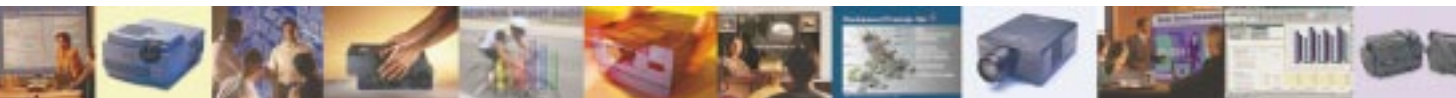
actual size: 10.8 in. W x 15.6 in. L x 6.5 in. H

## DESKTOP PROJECTOR 5900

You never know where you'll make your next presentation. With the Proxima DP5900 you'll always be prepared. It's a bright, durable, portable multimedia projector that offers the plug and play versatility needed for on-the-road presentations and vivid images to help you make the best impression.

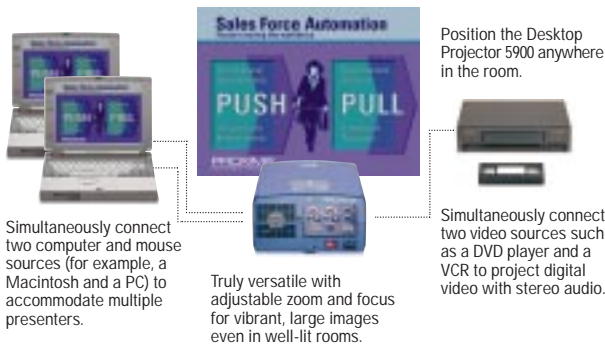
- 700 ANSI lumens of brightness enables lights-on presentations
- lightweight (14 pounds), compact and durable design makes it the one to travel with
- SVGA (832 x 624) resolution and XGA (1024 x 768) to VGA (640 x 480) compatibility supports full-screen images from any notebook
- projects images big enough for large training rooms or small auditoriums
- Laser F/X™ remote control with built-in laser pointer puts you in command of the projector, the computer — and your audience
- extra long-lasting UHP metal halide lamp keeps lamp changes to a minimum

**PROXIMA®**  
MULTIMEDIA PROJECTORS



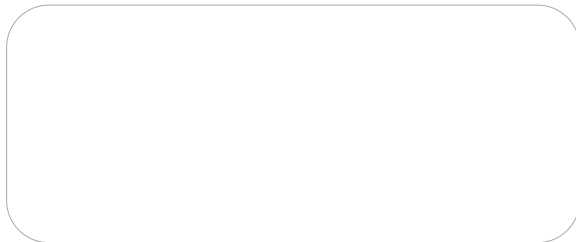
# DP5900

## DP5900 Set Up



## DP5900 Projection Distances/Image Sizes

Projection Distance	Image Size (Diagonal)					
	Minimum		Maximum			
3.3'	1.0 m	1.7'	0.5 m	2.7'	0.8 m	
6.9'	2.1 m	3.1'	0.9 m	5.0'	1.5 m	
12.0'	3.6 m	5.2'	1.6 m	8.3'	2.5 m	
17.7'	5.4 m	7.8'	2.4 m	12.5'	3.8 m	
23.6'	7.2 m	10.4'	3.2 m	16.6'	4.1 m	
35.1'	10.7 m	15.7'	4.8 m	25.0'	7.6 m	
46.9'	14.3 m	20.8'	6.3 m	33.3'	10.1 m	
92.0'	28.0 m	33.3'	10.1 m	53.3'	16.2 m	



## PROXIMA® MULTIMEDIA PROJECTORS

Main Office: 9440 Carroll Park Drive, San Diego, CA 92121-2298,  
(619) 457-5500, FAX (619) 457-9647, (800) 447-7692 (U.S. and Canada)

European Office: K.G. Meldahlsvei 9, Postboks 1403,  
N-1602 Fredrikstad, Norway +47 69 34 01 55, FAX +47 69 34 06 32

[www.proxima.com](http://www.proxima.com)

[www.presentersuniversity.com](http://www.presentersuniversity.com)

Proxima and Fit-to-View are registered trademarks of Proxima Corporation. Desktop Projector and Laser F/X are trademarks of Proxima Corporation. Other trademarks are the property of their respective owners. ©1999 Proxima Corporation. All rights reserved. Specifications are subject to change without notice. Lumen and lamp life may vary depending on lamp manufacturer.

03/99 709-00540-2 DP5900 datasheet.qxd

## WHAT'S INCLUDED

### Model DP5900 includes:

- Wireless remote control
- U.S., UK, and European power cords
- Product documentation
- Lens cap
- Computer video cable, computer mini-plug to mini-plug audio cable, Mac adapter, PC and Mac control cables, AV cable, S-Video cable
- Dust cover

## ORDERING INFORMATION

### Model Number

DP5900

For worldwide use

### Optional Accessories

A298	Carry-on rolling soft case
A302	Rolling hard case (checkable/shippable)
A303	Carry-on rolling hard case (checkable/shippable)
A58	AC/DC wireless boardroom speaker system
A59	AC/DC wireless portable speaker system

## TECHNICAL SPECIFICATIONS

<b>Computer Compatibility</b>	<ul style="list-style-type: none"> <li>IBM PC, PS/2, Pentium and Compatibles</li> <li>Apple Macintosh, Power Macintosh, and PowerBook families</li> </ul>
<b>Video Compatibility</b>	<ul style="list-style-type: none"> <li>NTSC, NTSC 4.43, PAL, SECAM</li> </ul>
<b>Input Sources</b>	<ul style="list-style-type: none"> <li>2 computer</li> <li>2 control ports for use with separate mouse controls</li> <li>2 video</li> <li>1 S-video</li> <li>4 audio</li> </ul>
<b>H-Sync Range</b>	<ul style="list-style-type: none"> <li>15 to 81 KHz</li> </ul>
<b>V-Sync Range</b>	<ul style="list-style-type: none"> <li>50 to 100 Hz</li> </ul>
<b>Brightness</b>	<ul style="list-style-type: none"> <li>700 ANSI lumens (typical)</li> </ul>
<b>Contrast Ratio</b>	<ul style="list-style-type: none"> <li>100:1 ANSI (typical)</li> </ul>
<b>Display Technology</b>	<ul style="list-style-type: none"> <li>1.3 in. polysilicon active-matrix TFT (Thin Film Transistor) x 3</li> </ul>
<b>Resolution</b>	<ul style="list-style-type: none"> <li>SVGA (832 x 624)</li> </ul>
<b>Resolutions Supported</b>	<ul style="list-style-type: none"> <li>SVGA (832 x 624), VGA (640 x 480), XGA (1024 x 768, Fit-to-View®)</li> </ul>
<b>Keystone Correction</b>	<ul style="list-style-type: none"> <li>7°</li> </ul>
<b>Number of Colors</b>	<ul style="list-style-type: none"> <li>16.7 million</li> </ul>
<b>Image Size (Diagonal)</b>	<ul style="list-style-type: none"> <li>1.7 ft (0.5 m) to 53.3 ft (16.2 m)</li> </ul>
<b>Lens</b>	<ul style="list-style-type: none"> <li>Motorized zoom lens 1.6:1 ratio</li> <li>Focal length: 47mm to 75mm, f/2.5 to f/3.2</li> </ul>
<b>Projection Distance (From Screen)</b>	<ul style="list-style-type: none"> <li>3.3 ft (1.0 m) to 92 ft (28.0 m)</li> </ul>
<b>Lamp</b>	<ul style="list-style-type: none"> <li>120 watt UHP metal halide</li> <li>Lamp life: 2,000 hours to 50% brightness</li> </ul>
<b>Audio</b>	<ul style="list-style-type: none"> <li>Two 2-watt stereo speakers with 2-watt stereo speaker output jack (mini-jack)</li> </ul>
<b>Remote Control</b>	<ul style="list-style-type: none"> <li>Includes zoom and focus control, computer mouse control, and laser pointer</li> </ul>
<b>Approvals</b>	<ul style="list-style-type: none"> <li>FCC Class A, CE, UL, CUL</li> </ul>
<b>Power Consumption</b>	<ul style="list-style-type: none"> <li>210 watts</li> </ul>
<b>Power Requirements</b>	<ul style="list-style-type: none"> <li>Auto switching 100-120 VAC, 200-240 VAC at 50-60 Hz</li> </ul>
<b>Operating Temperature (Sea Level)</b>	<ul style="list-style-type: none"> <li>40° F (5° C) to 95° F (35° C)</li> </ul>
<b>Weight</b>	<ul style="list-style-type: none"> <li>14.1 lb (6.4 kg)</li> </ul>
<b>Dimensions</b>	<ul style="list-style-type: none"> <li>10.8 in. (W) x 15.6 in. (L) x 6.5 in. (H)</li> <li>27.5 cm (W) x 39.5 cm (L) x 16.6 cm (H)</li> </ul>
<b>Warranty</b>	<ul style="list-style-type: none"> <li>Two years on parts and labor (excluding lamp)</li> </ul>

