

# LX650

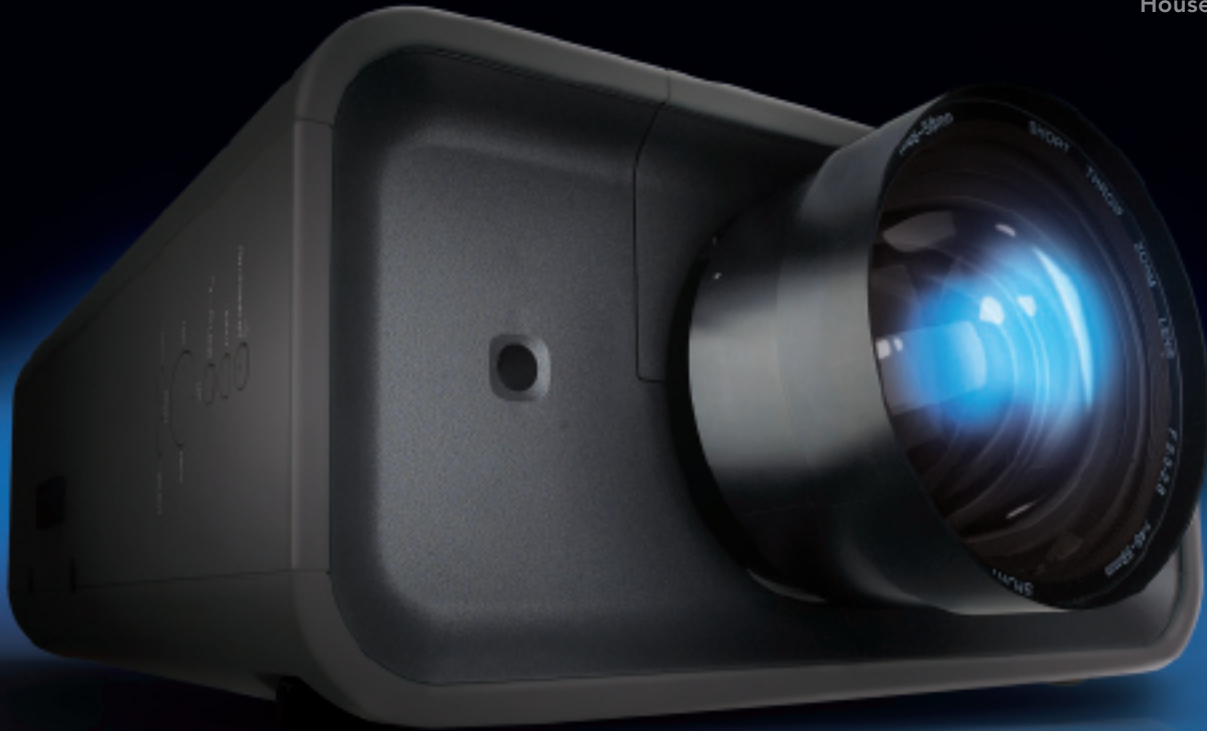
Boardrooms

Large conference rooms

Small auditoriums

Rental/Staging

Houses of worship



## Wide open possibilities for powerful displays

The Christie LX650 is the brightest, compact, single-lamp 3LCD projector available—featuring high brightness, high contrast, and the reliability of an advanced light engine design, for high performance and low cost of ownership.

With 6500 ANSI lumens and a contrast ratio of 2000:1, the Christie LX650 shines in breakout rooms, large meeting rooms and houses of worship with the flexibility to display high impact graphics, computer data and 10-bit video processing for flawless high definition video sources. Choose from a range of five optional lenses with horizontal

and vertical lens shift and a wide range of standard input formats for the broadest range of installation and operation flexibility.

The advanced light engine design delivers exceptional image performance. An innovative cooling and air filtration system means high reliability and less servicing. The first LCD projector to utilize this new optical design and self-cleaning filter system, maintenance intervals are extended reducing the overall cost of ownership.

**CHRISTIE®**

# Technical Specifications

## LX650 (103-012100-01)

Image	<ul style="list-style-type: none"> <li>6500 ANSI lumens</li> <li>90% brightness uniformity</li> <li>Contrast ratio: 2000:1 full field</li> </ul>
Display technology & resolution	<ul style="list-style-type: none"> <li>1.3" LCD x 3</li> <li>Native XGA 1024 x 768 resolution</li> </ul>
Input signal compatibility	<ul style="list-style-type: none"> <li>VGA through to UXGA (1600 x 1200)</li> <li>Horizontal &amp; vertical scaling, all inputs</li> <li>Accepts all current HDTV/DTV formats up to 1080i</li> </ul>
Scan rates	<ul style="list-style-type: none"> <li>Horizontal: 15 to 100 kHz, Vertical 48 to 100 Hz</li> </ul>
Pixel clock	<ul style="list-style-type: none"> <li>180 MHz</li> </ul>
Inputs	<ul style="list-style-type: none"> <li>DVI-D HDCP compliant</li> <li>HD15</li> <li>5-BNC: RGBHV/YPbPr</li> <li>1 Composite video, 1 S-Video</li> <li>Component video (3RCA)</li> <li>DB9 RS232</li> <li>USB (type B)</li> <li>Monitor out (analog)</li> </ul>
Dimensions	<ul style="list-style-type: none"> <li>Weight: 24.6 lb (11.2 kg)</li> <li>Size (L x W x H): 17.3 x 14.5 x 7.4" (440 x 370 x 187mm)</li> </ul>
Lamp	<ul style="list-style-type: none"> <li>1500 hrs (max brightness); 2000 hrs (low power mode)</li> <li>Single 330W NSH lamp</li> </ul>
Graphical user interface	<ul style="list-style-type: none"> <li>Direct Access intuitive user interface for complete projector control in twelve world languages (English, French, German, Spanish, Italian, Portuguese, Dutch, Swedish, Russian, Chinese, Korean, Japanese)</li> <li>Auto set-up feature</li> <li>Auto power-up feature</li> </ul>
Power requirements	<ul style="list-style-type: none"> <li>Current rating: 5.0A max @ 100 VAC, 4.1A max @ 120 VAC, 2.1A max @ 240 VAC</li> <li>Power consumption: 480W typical, 510W max</li> </ul>
Optical system	<ul style="list-style-type: none"> <li>Motorized offset: horizontal up to <math>\pm 20\%</math>; vertical up to <math>\pm 100\%</math></li> <li>Motorized zoom and focus</li> </ul>
Lens Options	<ul style="list-style-type: none"> <li>Fixed lenses: 0.8:1</li> <li>Zoom lenses: 1.3–1.8:1, 1.8–2.4:1, 2.4–4.3:1, 4.3–6.0:1</li> </ul>
Standard accessories	<ul style="list-style-type: none"> <li>Line cord</li> <li>Wireless remote unit with laser pointer</li> <li>User manual</li> <li>Computer cable</li> <li>Wired remote control cable</li> <li>USB cable</li> <li>S-Video cable</li> </ul>
Optional accessories	<ul style="list-style-type: none"> <li>Shipping case</li> <li>Ceiling mount</li> </ul>
Operating environment	<ul style="list-style-type: none"> <li>Temperature: 40 to 95° F (5 to 35° C)</li> <li>Humidity: 20–80% (non-condensing)</li> <li>Altitude: 0–8850ft (0–2700m)</li> <li>Audible noise: 38dBA</li> </ul>
Regulatory approvals	<ul style="list-style-type: none"> <li>UL 60950-1 1st edition</li> <li>CAN/CSA C22.2. No. 60950-1-03 1st edition</li> <li>IEC 60950-1:2001 1st edition</li> <li>FCC CFR 47, Part 15, Class B</li> <li>EN55022 Class B</li> <li>EN55024</li> </ul>
Limited warranty	<ul style="list-style-type: none"> <li>Product: 3 years parts and labor (excluding lamp)</li> <li>Lamp: 120 days or 500 hours (whichever comes first)</li> </ul>



▲ The Christie LX650 is a compact, low-profile, 3LCD projector that delivers strong image performance.



▲ Broad range connection options with standard inputs. With 6500 ANSI lumens and a contrast ratio of 2000:1, the Christie LX650 displays high impact graphics, computer data and 10-bit video processing for analog and digital sources including HDTV.

### Corporate offices

USA – Cypress  
ph: 714-236-8610  
Canada – Kitchener  
ph: 519-744-8005

### Worldwide offices

United Kingdom  
ph: +44 118 977 8000  
Germany  
ph: +49 2161 664540  
France  
ph: +33 (0) 1 41 21 44 04

Hungary/Eastern Europe  
ph: +36 (0) 1 47 48 100  
South Africa  
ph: +27 (0) 317 671 347  
Singapore  
ph: +65 6877 8737

Shanghai  
ph: +86 21 6278 7708  
Beijing  
ph: +86 10 6561 0240

Korea  
ph: +82 2 702 1601  
Japan  
ph: +81 3 3599 7481



Certificate # 601

For the most current specification information, please visit [www.christiedigital.com](http://www.christiedigital.com)

Copyright 2007 Christie Digital Systems, Inc. All rights reserved. All brand names and product names are trademarks, registered trademarks or tradenames of their respective holders. Canadian manufacturing facility is ISO 9001:2000 certified. Performance specifications are typical. Due to constant research, specifications are subject to change without notice. Printed in Canada on recycled paper. 2193 May 07-NA



**CHRISTIE®**