

SONY®



VPL-DX15
VPL-DX11
VPL-DX10

Powerful Mobile Projectors

sony.com/projectors



BrightEra™



Offering High-quality, Cost-effective Desktop Presentations – the VPL-D Series of Data Projectors

Packing high brightness and simple operation into a highly sophisticated, compact body, Sony's VPL-D Series of powerful tabletop projectors offers a great quality-per-cost balance for desktop presentations.

The VPL-DX15 and VPL-DX11 provide a high brightness of 3000 lumens, while the VPL-DX10 provides 2500 lumens. This high brightness, coupled with excellent picture quality in XGA (1024 x 768) resolution, allows users to make powerful desktop presentations in virtually any setting and under any lighting conditions.

The VPL-DX15 offers a variety of network functions and "PC-less" operation using a USB memory device – making presentations smarter than ever before.

Thanks to their light weight of approximately 4 lb 14 oz and 4 lb 11 oz for the VPL-DX15 and VPL-DX11/VPL-DX10, respectively, VPL-D Series projectors can be carried easily from room to room, and are ideal for use in small- to medium-sized presentation rooms, including corporate conference rooms and school classrooms.

VPL-D Series Common Features

High Picture Quality and Bright Images

By combining a new generation of inorganic LCD panels that utilizes Sony's BrightEra™ technology* with a 3LCD projection system, the VPL-D Series offers high picture quality and brightness. The VPL-DX15 and VPL-DX11 provide 3000 lumens brightness, while the VPL-DX10 provides 2500 lumens brightness, and all of these projectors offer XGA (1024 x 768) resolution.

* BrightEra is a brand name for the category of LCD panel that has inorganic alignment layers and pixels with large aperture ratios.

Compact and Lightweight Design

The VPL-D Series has a compact and lightweight body design, which offers a small footprint of approximately 11 5/8 x 2 29/32 x 8 1/32 inches and a light weight of approximately 4 lb 14 oz and 4 lb 11 oz for the VPL-DX15 and VPL-DX11/VPL-DX10, respectively.

3LCD Projection Offers Amazing Color Performance

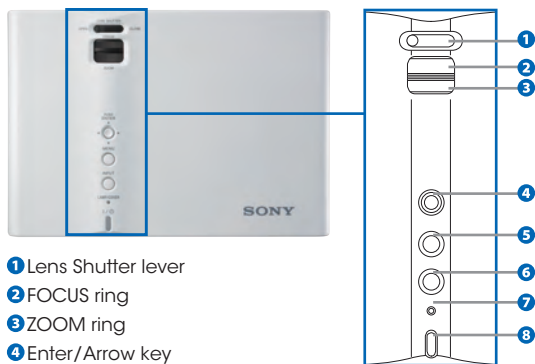
The VPL-D Series adopts the 3LCD projection system that uses three LCD panels. This system allows the projectors to present bright and natural images. It provides high light transmission and excellent color reproduction with high color light output*. It also provides smooth gradients in dark areas, and even helps prevent color breakup or the rainbow effect**.

* Color light output is a metric that measures a projector's ability to deliver color. Developed by color scientists using the same approach as light output (brightness) measurement, color light output provides a simple, accurate, and easy-to-understand way to evaluate a projector's color performance.

** The rainbow effect may appear as blurring or the separation of colors. It can only be seen in images projected by 1-chip sequential color projection systems.

Simple and Easy-to-use Control Panel

The control panel of each VPL-D Series projector is located on top of the unit, with all the essential controls positioned in a line, allowing users to operate the projector easily. These controls include the Power On/Standby, Input Select, and Menu keys, plus the Zoom and Focus rings, and Lens Shutter lever.



- 1 Lens Shutter lever
- 2 FOCUS ring
- 3 ZOOM ring
- 4 Enter/Arrow key
- 5 MENU key
- 6 INPUT key
- 7 LAMP/COVER indicators
- 8 I/⏻ (On/Standby) key

Off & Go

Once a presentation is complete, a VPL-D Series projector can be moved immediately to the next location, simply by turning the projector off and unplugging the AC power cord. There is no need to wait for the fan to turn off.

Short Projection Distance

VPL-D Series projectors come equipped with a short focal-length lens, which makes it possible to project images over a short distance. For example, an 80-inch* image can be projected from a distance of approximately 7.9 feet.

* Viewable area, measured diagonally.

Lens Shutter

Each projector in the VPL-D Series comes equipped with a mechanical lens shutter that can mute the projection of images onto the screen. Using the Lens Shutter lever situated on top of the projector, the operator can close the lens shutter and turn the projector screen completely dark – useful if there is a pause in the presentation, or the user wants to divert audience attention away from the screen. The lens shutter function is also useful for protecting the projector's lens when not in use and when transporting the unit to a new location.



VPL-DX15 Specific Features

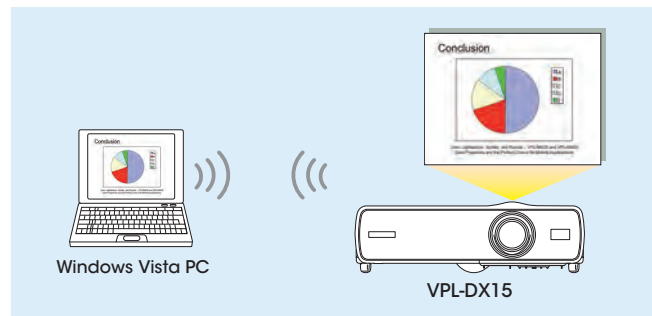
A Variety of Network Functions – Via LAN Cable or Wirelessly

When the VPL-DX15 is installed in a local area network (LAN), its versatile wireless presentation functions are available to any PC on that network. Installation can be via a LAN cable or wireless connectivity, and there is no need to install any additional network software on the PC.

Windows Vista Network Projector

With a PC running the Microsoft® Windows® Vista® operating system*, the operator can easily make a wireless network presentation with the VPL-DX15. By selecting the network projector application on the PC's Windows Vista menu, the operator can simply and instantly project the PC's screen display.

* Operating systems which can support the Windows Vista network projector function include Windows Vista Home Premium, Windows Vista Business, and Windows Vista Ultimate.



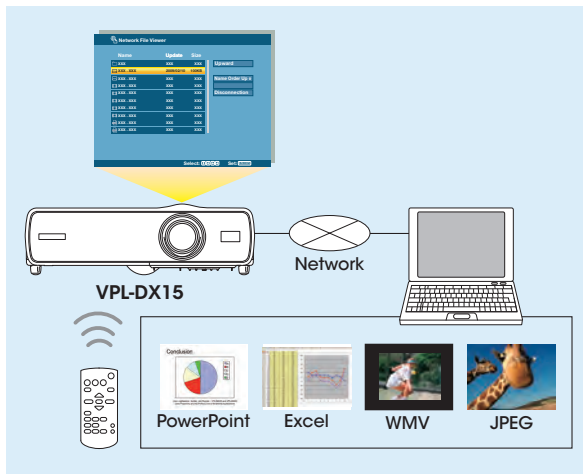
Network File Viewing*

When the VPL-DX15 is connected online, operators can easily access data files stored on a networked PC, and can project those files – as displayed on the PC screen – even if the PC is in a different location, far away from the presentation room.

These files can be selected and projected by the VPL-DX15 simply by manipulating the projector's Remote Commander® unit – no need to convert them in advance to other file formats, such as a JPEG format. Supported files include Microsoft PowerPoint®**, Excel®**, and Windows Media® video (WMV) and JPEG.

* Operating systems which can support the network file viewing function include Windows® 2000 Professional, Windows XP Home, Windows XP Professional, Windows Vista Home Premium, Windows Vista Ultimate, and Windows Vista Business.

** The VPL-DX15 may not fully support all the functions of these applications. For example, fonts, graphics, and animation effects may not be reproduced correctly. Transmission delays may occur when slides are turned over. These delays may occur when a slide contains a very large photo or a number of graphics, alternatively when a number of photos or graphics are used for the slide design. For details, please contact your nearest Sony office or authorized dealer.



Files Available for Network File Viewing

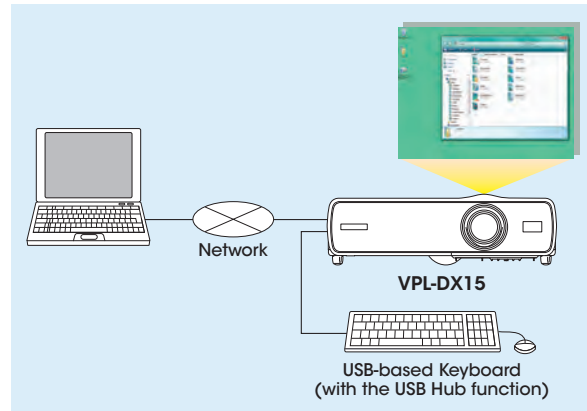
PowerPoint /Excel	
Software Version	Microsoft Office 97/2000/XP/2003
JPEG Image	
Resolution	Up to 1600 × 1200 pixels
Windows Media Video	
Resolution	Up to 720 × 576 pixels (or 720 x 480 pixels)
Video bit rate (recommended)	Up to 800 kbps (CBR)
Frame rate (recommended)	Up to 15 fps
Audio bit rate (recommended)	Up to 64 kbps (CBR)
Audio Sampling rate (recommended)	44.1 kHz (stereo)

Remote Desktop*

When the VPL-DX15 is connected online, operators can use the remote desktop function, which is supported by major operating systems**. By manipulating a keyboard and a mouse connected to the projector, operators can remotely control a PC via a network.

* To use the remote desktop function, a USB-based keyboard and a mouse must be connected to the projector through a USB-based hub.

** Operating systems which can support the remote desktop function include Windows XP Professional, Windows Vista Ultimate, and Windows Vista Business.

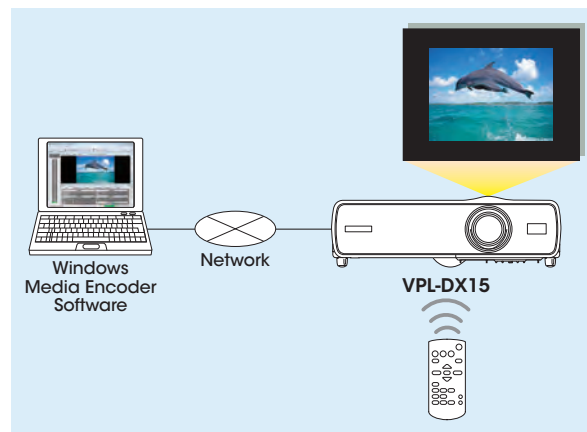


Streaming Video Client Function

The VPL-DX15 provides a streaming video client function. By installing Windows Media Encoder software*, the operator can use any PC as the streaming video server. This enables the VPL-DX15 to project streaming video supplied by the PC**, simply by manipulating the Remote Commander unit.

* Windows Media Encoder software is available from the Microsoft Download Center.

** The VPL-DX15 only accepts streaming video from PCs installed with Windows Media Encoder.



Remote Maintenance

Projector settings such as power ON/OFF can be controlled from a PC via a network. Projector status, such as the projector lamp's hours of usage, can also be monitored from the PC via the network.

Status information and error reports can be sent to designated recipients as an automatic e-mail notification for proactive maintenance action.

“PC-less” Presentation Using a USB Memory Device

By attaching a USB memory device*, such as the Sony Micro Vault® Series, to the VPL-DX15 USB connector, the operator can directly project data files stored on the USB memory device – no need to convert them in advance to other file formats, such as a JPEG format.

This is a very smart and convenient feature, as road warriors no longer need to carry a PC to their presentations. Supported file formats for this function include Microsoft PowerPoint**, Excel**, and WMV and JPEG.

* For available models, please contact your nearest Sony office or authorized dealer.

** The VPL-DX15 may not fully support all the functions of these applications. For example, fonts, graphics, and animation effects may not be reproduced correctly. Transmission delays may occur when slides are turned over. These delays may occur when a slide contains a very large photo or a number of graphics, alternatively when a number of photos or graphics are used for the slide design. For details, please contact your nearest Sony office or authorized dealer.

Files Available for USB File Viewing

PowerPoint /Excel	
Software Version	Microsoft Office 97/2000/XP/2003
JPEG Image	
Resolution	Up to 1600 x 1200 pixels
Windows Media Video	
Resolution	Up to 720 x 576 pixels (or 720 x 480 pixels)
Video bit rate (recommended)	Up to 800 kbps (CBR)
Frame rate (recommended)	Up to 15 fps
Audio bit rate (recommended)	Up to 64 kbps (CBR)
Audio Sampling rate (recommended)	44.1 kHz (stereo)

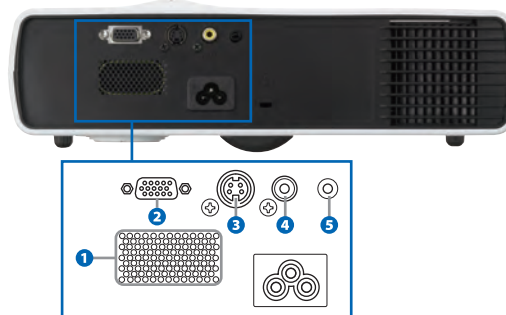


Other Features

- Auto Vertical Keystone Adjustment
- Auto Input Search
- Ceiling-mountable Design
- Direct Power On
- Image Freeze
- Picture Muting (Image Muting)
- Audio Muting
- Digital Zoom (4x)
- Power-saving Mode
- High Security
 - Password-authentication System
 - Control Panel Key Lock
 - Kensington®-style Lock Port

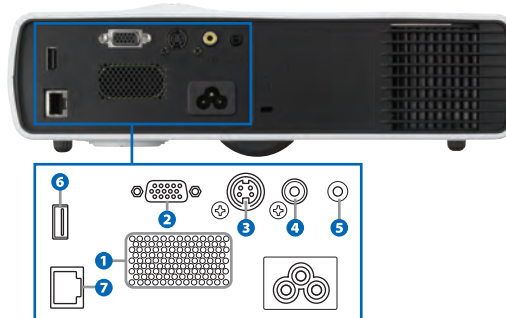
CONNECTOR PANELS

VPL-DX11/VPL-DX10



- 1 Speaker
- 2 INPUT A (Analog RGB) connector
- 3 S-Video connector
- 4 VIDEO jack
- 5 AUDIO jack

VPL-DX15



- 1 Speaker
- 2 INPUT A (Analog RGB) connector
- 3 S-Video connector
- 4 VIDEO jack
- 5 AUDIO jack
- 6 USB connector
- 7 Network connector

OPTIONAL ACCESSORIES

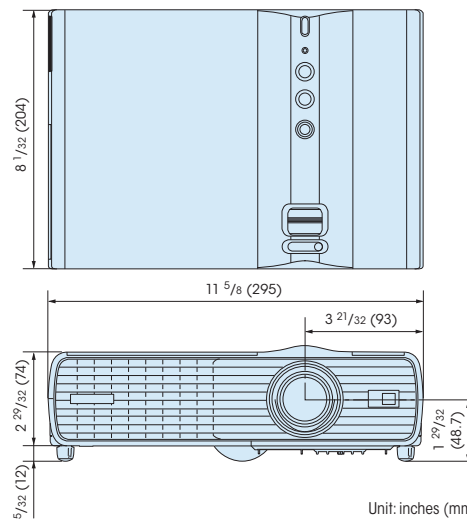


LMP-D200
Projector Lamp (for replacement)



PAM-200
Ceiling Mount

DIMENSIONS



SPECIFICATIONS

		VPL-DX15	VPL-DX11	VPL-DX10
Optical				
Projection system	3 LCD panels, 1 lens projection system			
LCD panel	0.63-inch XGA panel, 2,359,296 (1024 x 768 x 3) pixels			
Projection lens	1.2 times zoom lens, f = 18.63 to 22.36 mm, F 1.65 to 1.80			
Lamp	200 W ultra high pressure lamp			
Color light output	3000 lumens (Lamp mode: high) 2400 lumens (Lamp mode: standard)		2500 lumens (Lamp mode: high) 2000 lumens (Lamp mode: standard)	
Light output	3000 lumens (Lamp mode: high) 2400 lumens (Lamp mode: standard)		2500 lumens (Lamp mode: high) 2000 lumens (Lamp mode: standard)	
Screen coverage	40 to 300 inches (viewable area measured diagonally)			
Throwing distance	40-inch	Approx. 3.9 to 4.3 feet (1.2 to 1.3 m)		
	60-inch	Approx. 5.9 to 6.6 feet (1.8 to 2.0 m)		
	80-inch	Approx. 7.9 to 8.9 feet (2.4 to 2.7 m)		
	100-inch	Approx. 9.8 to 11.2 feet (3.0 to 3.4 m)		
	120-inch	Approx. 11.8 to 13.5 feet (3.6 to 4.1 m)		
	150-inch	Approx. 14.8 to 16.7 feet (4.5 to 5.1 m)		
	180-inch	Approx. 17.7 to 20.0 feet (5.4 to 6.1 m)		
	200-inch	Approx. 19.7 to 22.3 feet (6.0 to 6.8 m)		
	250-inch	Approx. 24.6 to 27.9 feet (7.5 to 8.5 m)		
300-inch	Approx. 29.5 to 33.8 feet (9.0 to 10.3 m)			
Signals				
Color system	NTSC _{3.58} , PAL, SECAM, NTSC _{4.43} , PAL-M, PAL-N, PAL60 (automatically/manually selected)			
Resolution	Video	750 TV lines		
	RGB	1024 x 768 pixels		
Acceptable computer signals	fH: 19 to 80 kHz, fV: 48 to 92 Hz (Up to SXGA+ (fV 60Hz))			
Acceptable video signals	15 kHz RGB, component 50/60 Hz, progressive component 50/60 Hz, DTV (480/60i, 480/60p, 575/50i, 575/50p, 720/60p, 720/50p, 1080/60i, 1080/50i), composite video, S-video (Y/C)			
Speaker				
Speaker output	Mono, max. 1 W			
General				
Dimensions (W x H x D)	Approx. 11 5/8 x 2 29/32 x 8 1/32 inches (295 x 74 x 204 mm) (excluding projection parts)			
Weight	Approx. 4 lb 14 oz (2.2 kg)		Approx. 4 lb 11 oz (2.1 kg)	
Power requirements	AC 100 to 240 V, 3.6 to 1.6 A, 50/60 Hz			
Power consumption	Max. 320 W, Standby: approx. 10.5 W (standard mode)/3.0 W (low mode)		Max. 320 W, Standby: approx. 5.5 W (standard mode)/3.0 W (low mode)	
Operating temperature	32 to 95 °F (0 to 35 °C)			
Operating humidity	35 to 85 % (no condensation)			
Storage temperature	-4 to 140 °F (-20 to 60 °C)			
Storage humidity	10 to 90 % (no condensation)			
Inputs/Outputs				
Input	Analog RGB/Component, HD D-sub 15-pin			
S-Video input	Y/C, mini DIN 4-pin			
Video input	Composite video, RCA phono jack			
Audio input	Stereo mini jack			
USB	USB type A connector	—		
Network	RJ45, IEEE 802.11 a/b/g	—		
Supplied accessories				
RM-PJ6 Remote Commander® Unit (1), Lithium battery (CR2025) for Remote Commander unit (1), HD D-sub 15 pin cable (2 m) (1), Carrying case (1), AC power cord (1), Security label (1), Operating instructions (CD-ROM) (1), Quick reference manual (1), Safety regulations (1), Warranty Card				

SONY

Sony Electronics Inc.
1 Sony Drive
Park Ridge, NJ 07656
sony.com/projectors

DI-0181 (MK10559V4)

©2009 Sony Electronics Inc. All rights reserved.
Reproduction in whole or in part without permission is prohibited.
Features and specifications are subject to change without notice.
All non-metric weights and measurements are approximate.
Sony, BrightEra, Remote Commander, and Micro Vault are trademarks of Sony.
Microsoft, PowerPoint, Windows, Windows Media and Vista are trademarks of Microsoft Corporation.
Kensington is a trademark of Kensington Computer Products Group.
All other trademarks are the property of their respective owners.

Printed in USA (8/09)